

# Opening the Cosmos TV

# COSMOS

## Step by Step Guide

Disconnect power. **NEVER** connect power when the TV case is open.



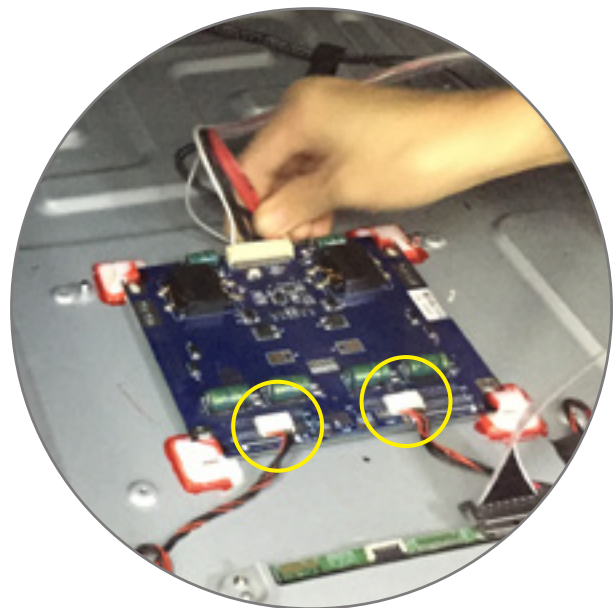
**1** Using cutter, cut the silicon on the sides of the TV.



**2** With a flat screw driver, nudge the lid to gently to take it off



**3** Unplug the wires connected to the middle board to separate 2 panels.



Note: Do not remove the cords encircled in the picture above.

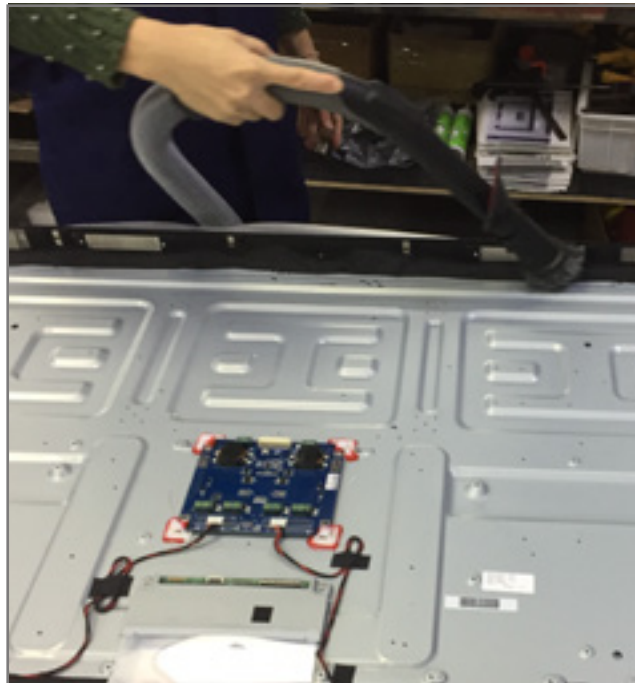
# Opening the Cosmos TV

# COSMOS

## Step by Step Guide



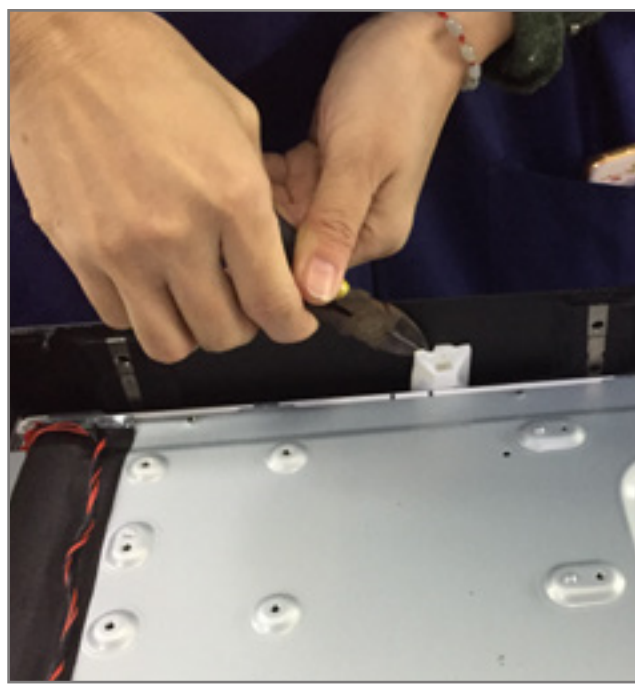
**4** Unscrew the frame to take it off.



**5** Clean the T.V. with a vaccum.



**6** Peel the black tape around the T.V.



**7** Using a plier, remove the white paddings on the T.V.

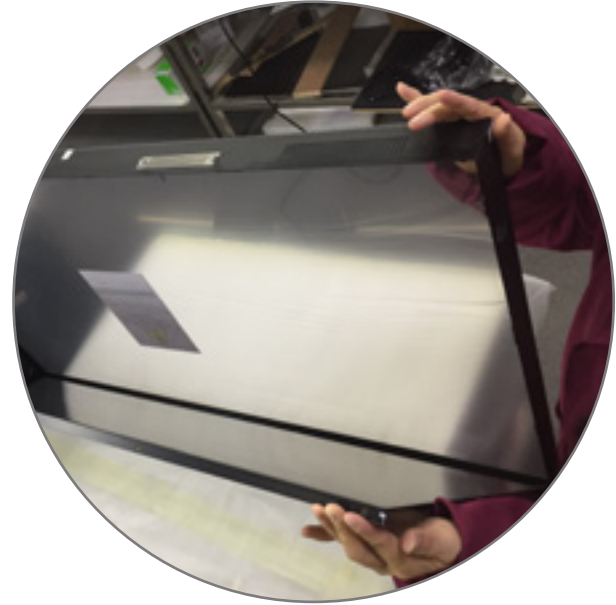
# Opening the Cosmos TV

## Step by Step Guide

COSMOS



**8** Take off the T.V. cover.



Closer View

Disconnect power. **NEVER** connect power when the TV case is open.