

How to adjust settings of the Microwave sensor



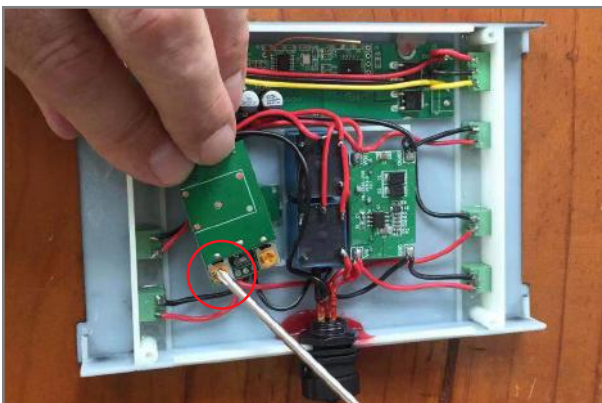
1 Remove cover

Use a Philips screw driver to remove the cover of the box.



2 Pull out the sensor

Carefully pull the Microwave sensor from the box and flip it. Please use some force to remove this as this is glued to the holder.



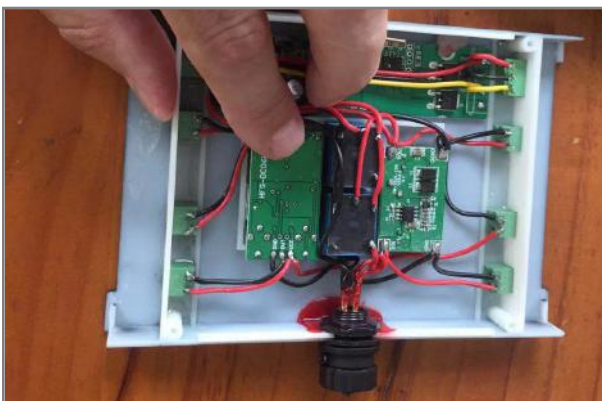
3 Adjust light sensitivity

Twist the left adjustment screw to adjust the distance and sensitivity of the light.



4 Adjust Time

Twist the right adjustment screw to control the time. Time can be adjusted from 1-180 seconds.



5 Test and Return sensor

Test if the light and the settings are as you like. When finished, put the sensor back to where it was pulled out from.



6 Close the box

Cover the box up and securely tighten its screws.