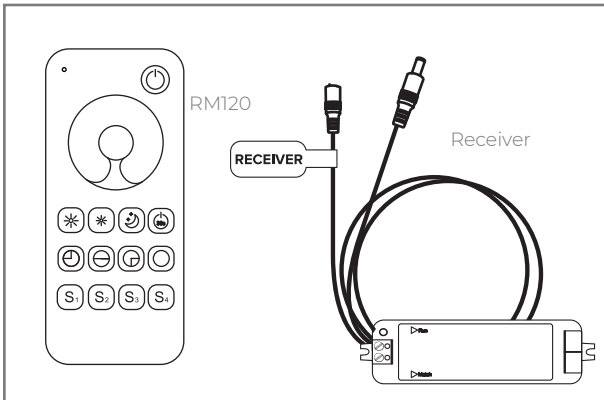
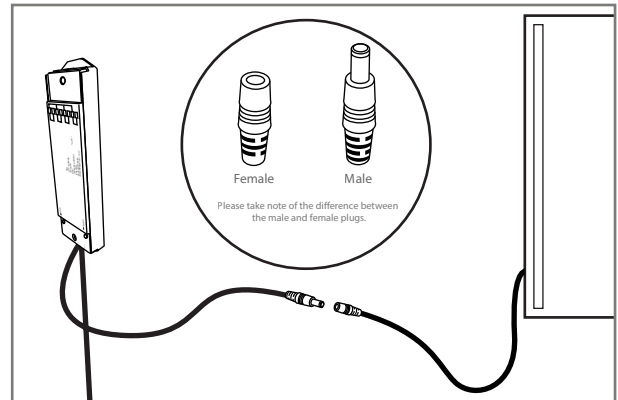


## Instruction Manual



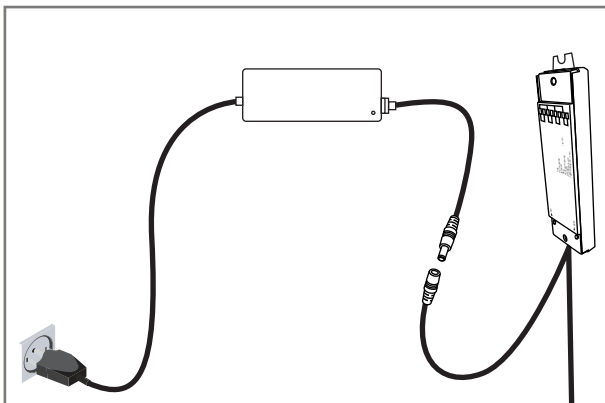
### 1 Check the items after receiving

Before installing, check to ensure that you have received all the package contents.



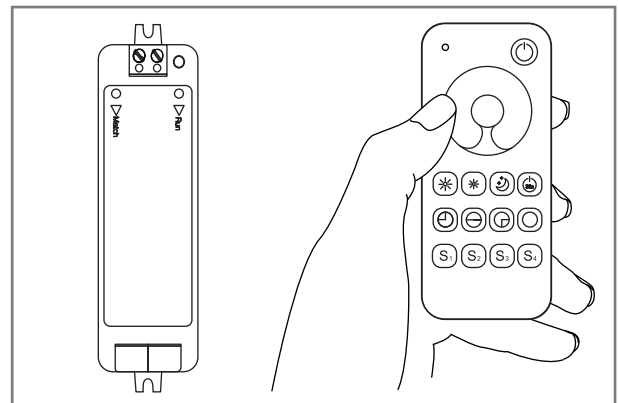
### 2 Connect the Receiver and the Mirror.

Take the end of the receiver with the male plug and connect it with the female plug of the mirror.



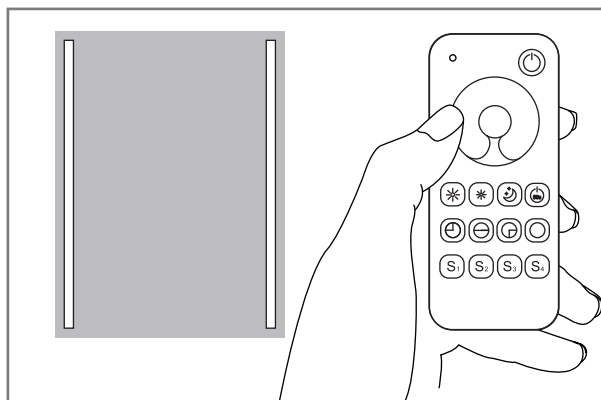
### 3 Connect the Receiver and the Power Supply

Take the female end of the receiver and connect it with the male plug of the power supply. Then plug the power supply to the power source.



### 4 Match the Remote and the Receiver.

Press the match button on the receiver. The circle above the word run will start blinking red. Once that light is steady, then the receiver has found the remote. A blue light will also flash on top of the remote to indicate that it's ready to use.



### 5 Finished.

Your Remote is connected and ready to use.